



Audits

24-August-2016

Demo Site





Facility: Demo Site [Demo001]

Address

Head office, Galway, Ireland

Website

Phone

Fax

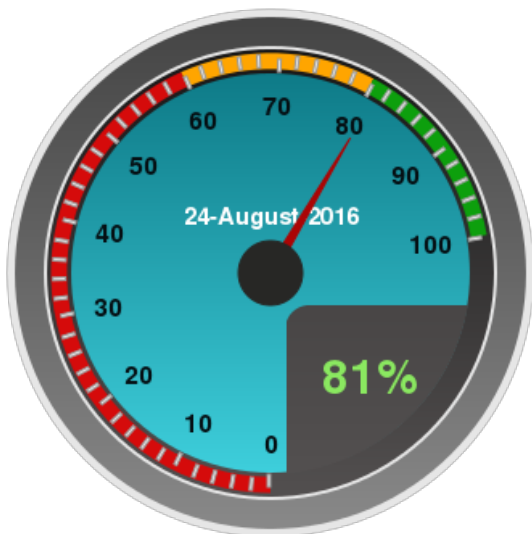
Inspector

Todoran, Ciprian

Complete Date

24-August-2016

Previous Completed Audits



Inspection Breakdown

Checked items in compliance:

11

Checked items in non-compliance:

11

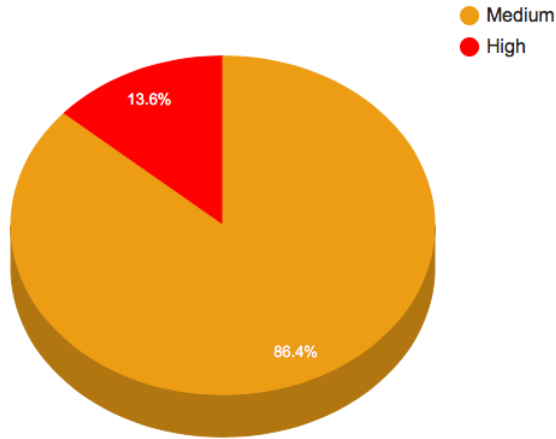
Checked items in non-compliance:

0

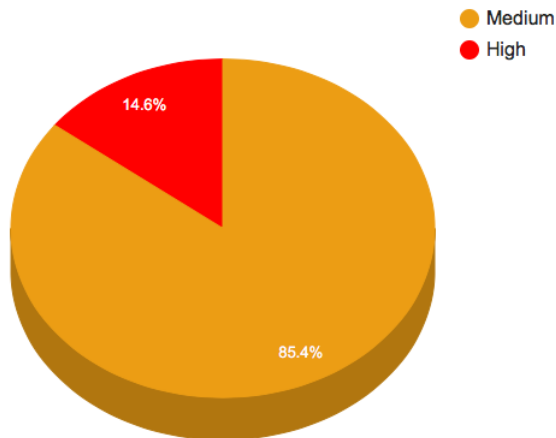
Items that are not applicable:

4

Inspection Breakdown by Level



Points Achieved by Level



General Areas

20/24 83%

20

0

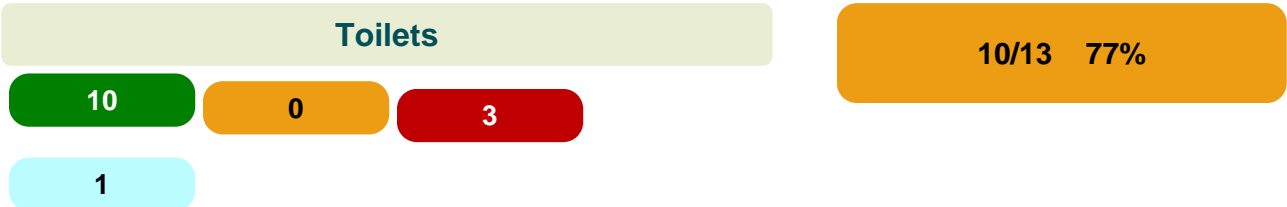
4

1

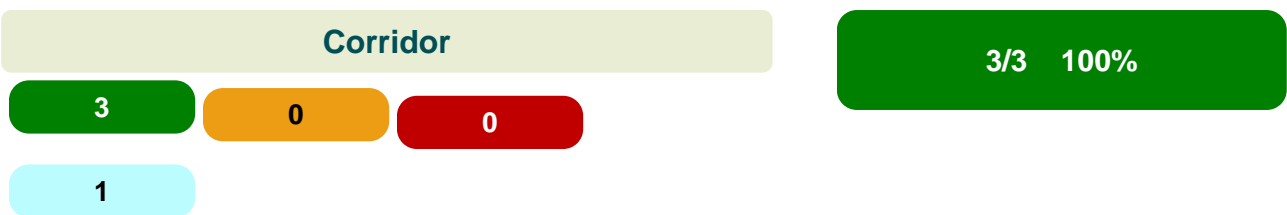
Question	Observation	Priority	Result
Criteria as above: floors including edges and corners	Corners dusty behind doors, skirting board dusty	H	Non Compliant
Criteria as above: walls	Coffee stains on the wall behind bin; Entrance-spider web in corner	M	Non Compliant

Criteria as above: high and low surfaces	General areas-top of the doors dusty, file cabinet dusty, picture frames dusty	M	Non Compliant
Work stations including telephones and key boards are clean and free of dust	Desk-behind PC dusty	M	Non Compliant
The environment is tidy, well maintained, free of rust, blood or body substances, dust, dirt, debris, spillages and clutter. This includes bed frames		H	Compliant
Criteria as above:lockers		H	Compliant
Criteria as above:tables		H	Compliant
Criteria as above:internal and external stairs, steps and lifts, corridor?		M	Compliant
Criteria as above: radiators		M	Compliant
Staff wearing appropriate PPE while carrying out cleaning tasks		M	Compliant
Internal and signage should be clean, updated, well maintained and laminated , if paper signage is used i.e color coding, H&S posters		M	Compliant
Nozzles of wall mounted alcohol gels and hand disinfectants must be cleaned, hand gel dispensers should be replaced when empty. The same criteria applies to soap dispensers	Dispensers to be checked underneath	M	Compliant
Fixtures are clean:electrical fixtures e.g switches, sockets, data points, all light fittings		M	Compliant
A warning sign : "Cleaning in Progress" is used and the warning sign is clean		M	Compliant
Cleaning equipment used for cleaning is clean		M	Compliant
There should be a process for cleaning the curtains and blinds. This should include shower curtains where present.Records should be maintained of curtain changing		H	Compliant
Records of the cleaning schedules are kept and available. If applicable I am Clean sticker is present		H	Compliant
All clinical outlets(including shower outlets)should be regularly flushed at a temperature in accordance with national guidelines		M	Compliant
Bins are clean and emptied		M	Compliant
vents are clean and free of dust		M	Compliant
Check that chairs are free of dust, rust, blood, debris		H	Compliant

Is there a handwash sink or alcohol gel available?	M	Compliant
Is behind bins and all other furniture clean?	H	Compliant
Interview a staff on cleaning procedures and how to clean a blood spillage	M	Compliant



Question	Observation	Priority	Result
Floor is clean including corners and edges	Male toilet-floor dusty under/behind bin and around toilet	M	Non Compliant
Vents are clean	Female toilet-Vent dusty	M	Non Compliant
Bath/sink and accessories are clean	Male toilet-toilet bowl stained on the outside	M	Non Compliant
Toilets/Bathrooms are clean and free from inappropriate items		M	Compliant
High and low surfaces are clean		M	Compliant
Walls/Tiles Surfaces are clean		M	Compliant
Raised toilet seats are clean and free from any substances		M	Compliant
Dispensers such as soap, paper towels, toilet paper are clean inside and out and filled with supplies		M	Compliant
Showers are clean		M	Compliant
Toilet brushes are clean inside/out		M	Compliant
There is evidence that baths, showers and sinks have planned for provision for running the water weekly		M	Compliant
Shower Curtains are clean		M	Compliant
Commodes and all basins are clean and free of body fluids		M	Compliant



Question	Observation	Priority	Result
All high and low surfaces are clean and free of dust		M	Compliant
Floor is clean including corners and edges		M	Compliant
All fixtures and fittings are clean		M	Compliant

Reception

5/7 71%

5

0

2

1

Question	Observation	Priority	Result
All high and low surfaces are clean	Top of Pcs dusty, alarm panel dusty	M	Non Compliant
Bins are clean and emptied	Reception-Caffe stains on the outside of the bin	M	Non Compliant
Floor is clean including corners and edges		M	Compliant
work stations including phone and keyboards are clean and free of dust		M	Compliant
Chairs are clean and free of dust		M	Compliant
Are lifts clean , free of dust inside and outside		M	Compliant
Stairs are stairs clean and free of dust		M	Compliant

Domestic Room

10/12 83%

10

0

2

0

Question	Observation	Priority	Result
Cleaning products and consumables should be stored in shelves and cupboards	Chemical bottles on the floor in plain sight	M	Non Compliant
Is the door of the domestic store room closed?	Domestic room-door kept open	M	Non Compliant
All cleaning equipment and storage facilities are clean		M	Compliant
Floor including corners and edges is clean		M	Compliant
All high and low surfaces are clean		M	Compliant
Personal Protective Equipment should be available and appropriately disposed of		M	Compliant
All cleaning equipment should be cleaned daily and records of this should be available		M	Compliant

Mop heads should be laundered daily and should be stored according to local policy or should be single use	M	Compliant
Products used for cleaning and disinfection should comply with the local policy are are used at the correct dilution and discarded appropriately	M	Compliant
Information on color coding system in use is available in the domestic s room	M	Compliant
Hand hygiene facilities are available and ready for domestic use	M	Compliant
Make sure bins are clean inside and out	M	Compliant

General Comments

Facilities: -light bulb broken at the Reception -wall damaged on the corridor outside Office

Follow Up Actions						
	Date Observed	Location	Hazard	Action	Individual Responsible	Status
➡	24-August-2016		Low	Corners dusty behind doors, skirting board dusty	Neylon, Sylvester	Outstanding
➡	24-August-2016		Low	Coffee stains on the wall behind bin; Entrance-spider web in corner	Neylon, Sylvester	Outstanding
➡	24-August-2016		Medium	General areas-top of the doors dusty, file cabinet dusty, picture frames dusty	Neylon, Sylvester	Outstanding
➡	24-August-2016		Low	Dispensers to be checked underneath	Neylon, Sylvester	Outstanding
➡	24-August-2016		Low	Desk-behind PC dusty	Sava, Maria	Outstanding
➡	24-August-2016		Medium	Male toilet-floor dusty under/behind bin and around toilet	Sava, Maria	Outstanding
➡	24-August-2016		Low	Female toilet-Vent dusty	Sava, Maria	Outstanding
➡	24-August-2016		High	Male toilet-toilet bowl stained on the outside	Todoran, Ciprian	Outstanding
➡	24-August-2016		Low	Top of Pcs dusty, alarm panel dusty	Todoran, Ciprian	Outstanding
➡	24-August-2016		Low	Reception-Caffe stains on the outside of the bin	Sava, Maria	Outstanding
➡	24-August-2016		High	Chemical bottles on the floor in plain sight	Sava, Maria	Outstanding
➡	24-August-2016		High	Domestic room-door kept open	Todoran, Ciprian	Outstanding

Supporting Images